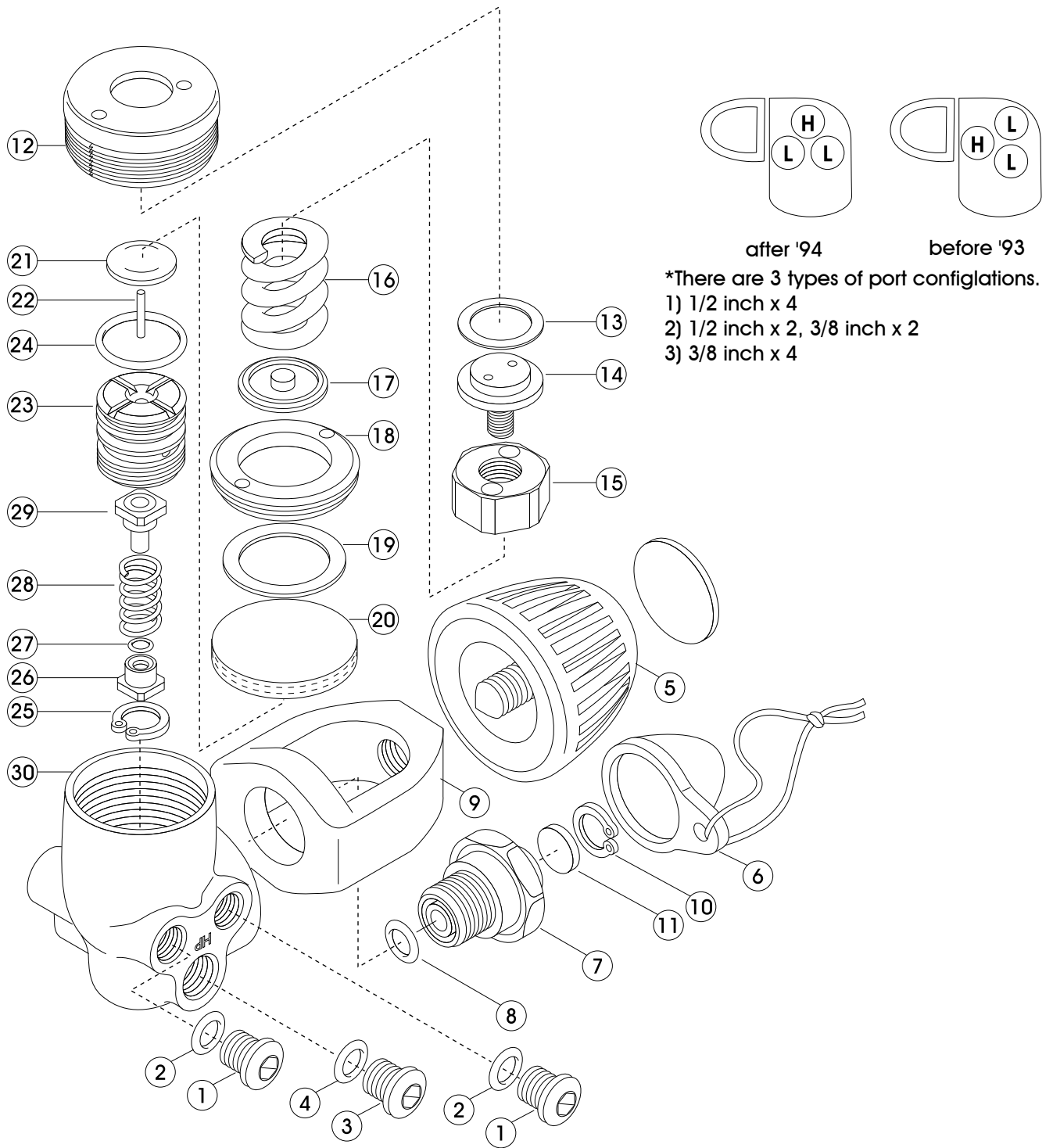


1st stage a-102 after '94



No.	Code	Description
1	3100101101	PLUG (A) : 3/8 FOR L.P.
2	3993592011	O-RING ARP-01 1/HS75
3	3100101903	PORT PLUG, 7/16 FOR H.P. PORT
4	3993898012	O-RING ARP-01 2/HS90 ID9.25 VITON
5	2102080158	YOKE SCREW W/DECAL
6	1184380003	DUST CAP ASSY
7	3100101106	YOKE RETAINER : A-102/108/320
8	3993898011	O-RING ARP-01 1/HS90 ID7.65 VITON
9	3101001032	YOKE FOR PRESTIGE (L)
10	3990500101	RETAINING RING
11	3990800411	FILTER 150 MICRON :SUS316 D/12.6 T/1.66
12	3100201044	BODY CAP 102
13	3102470303	TEFLON WASHER FOR REGULATOR
14	3100201043	ADJUSTING SCREW FOR REGULATOR
15	3100203047	GUIDE NUT FOR REGULATOR
16	3101200062	ADJUST SPRING FOR L.P:FOR REGULATOR

No.	Code	Description
17	3100101111	SPRING PAD : FOR A-101,2,5,7,8,10,320
18	3100203046	DIAPHRAGM RETAINER FOR REGULATOR
19	3102480001	DIAPHRAGM WASHER PET
20	3103980105	HIGH PRESSURE DIAPHRAGM
21	3100101105	PUSH ROD PAD : FOR A-101,2,5,7,8,10
22	3990100072	PUSH ROD PIN : A-101,2,5,7,8,10
23	3100101115	H.P. MODULE WITH GUIDE SPEC FOR REGULATOR
24	3993898017	O-RING ARP-01 7/HS90 ID17.17 VITON
25	3990500101	RETAINING RING
26	2100100050	BALANCE CHAMBER WITH O-RING: A-101,2,5,7,8,10,20
27	3993898006	O-RING ARP-006/HS90 ID2.90 VITON
28	3101200071	HIGH PRESSURE SPRING : A-101,2,5,7,8,10,320
29	3100103210	PTMEG 2000 HIGH PRESSURE SEAT
30	3101001035	BODY A-102 FOR REGULATOR